



ODE  **O'Donnell Engineering**
One of Ireland's leading agricultural engineering companies

**Livestock Handling
& Housing Equipment**



Visit our website at www.odonnellengineering.ie



Find us on Facebook

Table of Contents

Notes	3	Weighing & EID Systems		Milking Parlour	
Design & Planning	4-5	Dini Argeo	30	Parlour Stallwork	45
Drop Front Cubicles		Dinamica Generale	30	Parlour Mangers	45
Wall Mounted Cubicles	6	iLivestock eWeigh System	30	Parlour Locking Stalls	45
Rail Mounted Cubicles	6	Gallagher Systems	31	Pneumatic Entry / Exit Gates	46
ODE Flexi Cubicle	7	Tag Readers	32	Collection Yard Forcing Gate	46
End Cubicle	8	Crush Platform	33	ODE Automatic Cattle Drafter	47-49
Cubicle to Cubicle Gate	8	Portable Weighing Scales	33	ODE Weight Draft System	50-51
Brisket Pipe	8	Troughs & Feeders			
Up and Over / Sash Gates	9	Portable Troughs	34	Sheep Race	
Cubicle Shed Layout	10	Bull Feeder	34	Fixed Sheep Race	52
Cow Brushes	11	Calf Creep Feeder	35	Mobile Sheep Race	53
Cow Mat & Mattress Systems		Calf Feed Troughs	35	Race Components	54-55
Animat Original Cow Mats	12	Feed Trailer	36	Roll Over Crate	56
30mm Honeycomb Mattress	13	Drinkers & Water Troughs		Weighing Scales	57
Foam Interlocking Mats	13	Yard Troughs	37	Feed Barriers & Pen Divisions	
Roll Out Rubber Mats	14	S/Steel Tip Over Troughs	37	Adjustable Feed Rails	58
Animat Mattress System	15	Fixed 1.5m Galv. Drinker	37	Pen Division Gates	58
Feed Barriers		Kleen Drinker	38	Sheep Pen Layout	59
Diagonal Feed Barriers	16	Galvanised Troughs	38	Walk Through Feeder	60
Self Locking Barriers	16	Calf Handling		Hay Racks	60
Long Reach Feed Barriers	16	3 in 1 Calving Gate	39	Sheep Plastic Slats	61
Combination Barriers	17	Yard Transporter	39	Lamb Creep Feeder	62
Gates & Pen Divison	18	Dehorning Crates	40	Other Sheep Equipment	
Internal Penning Layout	19	Transport Carts	41	Adoption / Starter Unit	63
Cattle Handling		Calf Group Penning		Circular Feeder	63
Crush Races & attachments	20-22	Calf Plastic Slats	42	Footbath	63
Forcing Penning	24-25	Hay Racks	42	Extras & Fittings	66
Portable Cattle Handling		Miscellaneous Products			
Mobile Cattle Crush	26	Agitation Covers	43	Notes	67
Caesarean & Suckling Crate	27	Cattle Grids	43	About Us	68
Custom Portable Crush	27	Entrance Gates	44		
Hydraulic Cattle Crush	28				
Hoof Pairing Crate	29				





Design & Planning



With over 40 years of experience in the Irish & International agricultural sector, O'Donnell Engineering complete any design and planning required for:

- Bull Penning
- Custom Cattle Crush Designs
- AI Stations
- Automatic drafting solutions
- Calf Group Penning Design
- Sheep race and penning
- Parlour Mangers and rump rails retro-fits
- Cattle Slatted Unit Housing Design
- Automated tag reading penning system
- Cattle Marts
- College Cattle Housing and Penning
- Retro-fitting existing cubicle sheds
- Mobile cattle and sheep handling
- Overhead walkways

All design work is completed in the latest computer 3D technology to produce a complete and efficient design. All design work is completed by O'Donnell's internal engineering department which can custom any design to suit its application and customers' requests.





Drop Front Cubicles



Wall Mounted Cubicle

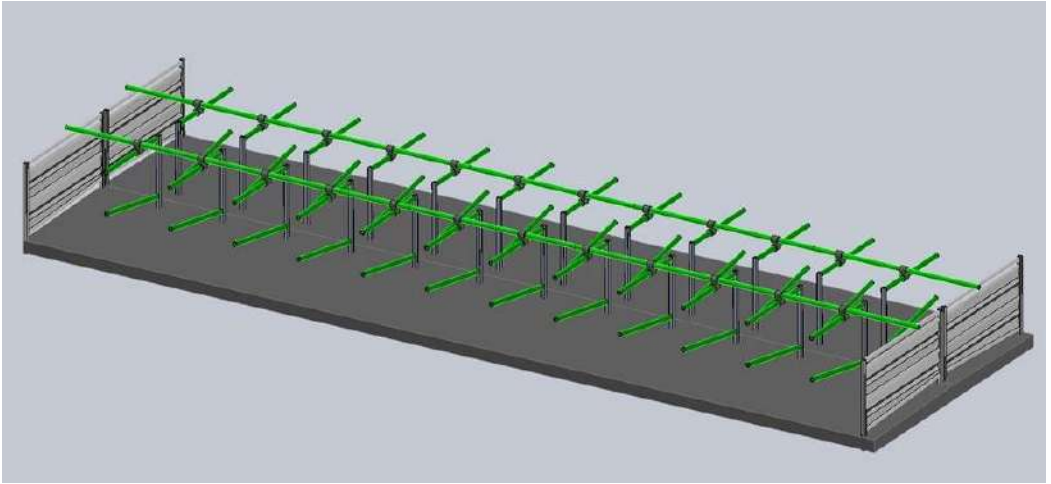
- Through M16 bolt with 5mm backplate
- Cubicles made to suit size of bed and slope of existing walls if required
- 5mm Full length wall mounting plate installed prior to delivery



Rail Mounted Cubicle

- Where existing wall not suitable or placing beds facing each other
- Ø76mm support posts located 8ft to 9ft
- Cubicle mounted on Ø76mm rails allowing height and width adjusting
- Pressed steel clamps with galvanised bolts and lock nuts
- Cubicle manufactured to suit size of bed and come pre-drilled for fitting

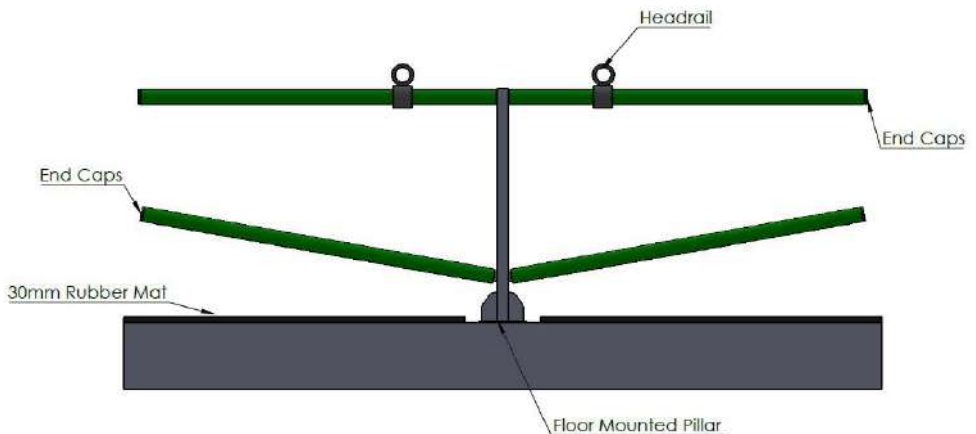
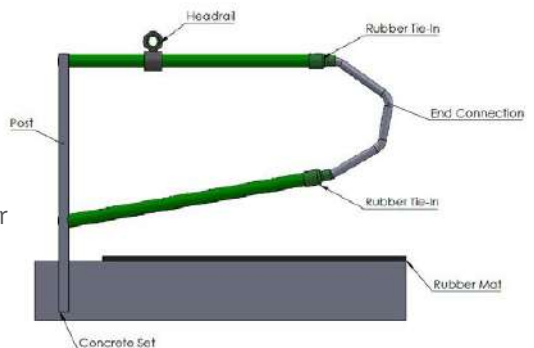




Flexible single and face to face cubicle with following designs:

1. Open end flexi cubicle
2. Closed loop flexi cubicle

- Steel mounting posts set in concrete, floor or rail system mounted
- 3" Flexi piping designed specifically for cow cubicles for durability and comfort





Drop Front Cubicles



End Cubicle

- Made to suit size of cubicle bed
- Welded cubicle with folded sheeting
- Completely free standing and can be cast in concrete or bolted to pre-cast bed

Cubicle to Cubicle Gate

- 3/B Adjustable swing gate c/w full mounting bracket mounted on cubicles
- Height adjustable resting leg to secure to ground if required
- Adjustable gate design to suit passage widths
- Easily moved when adjusting holding areas



Brisket Pipe

- Ø110mm HDE Watermain Blue Pipe
- Clamped to cubicle for full adjustment
- Standard with Bracket & U-Bolt
- Wrap around bracket also available
- Timber Brisket option also available



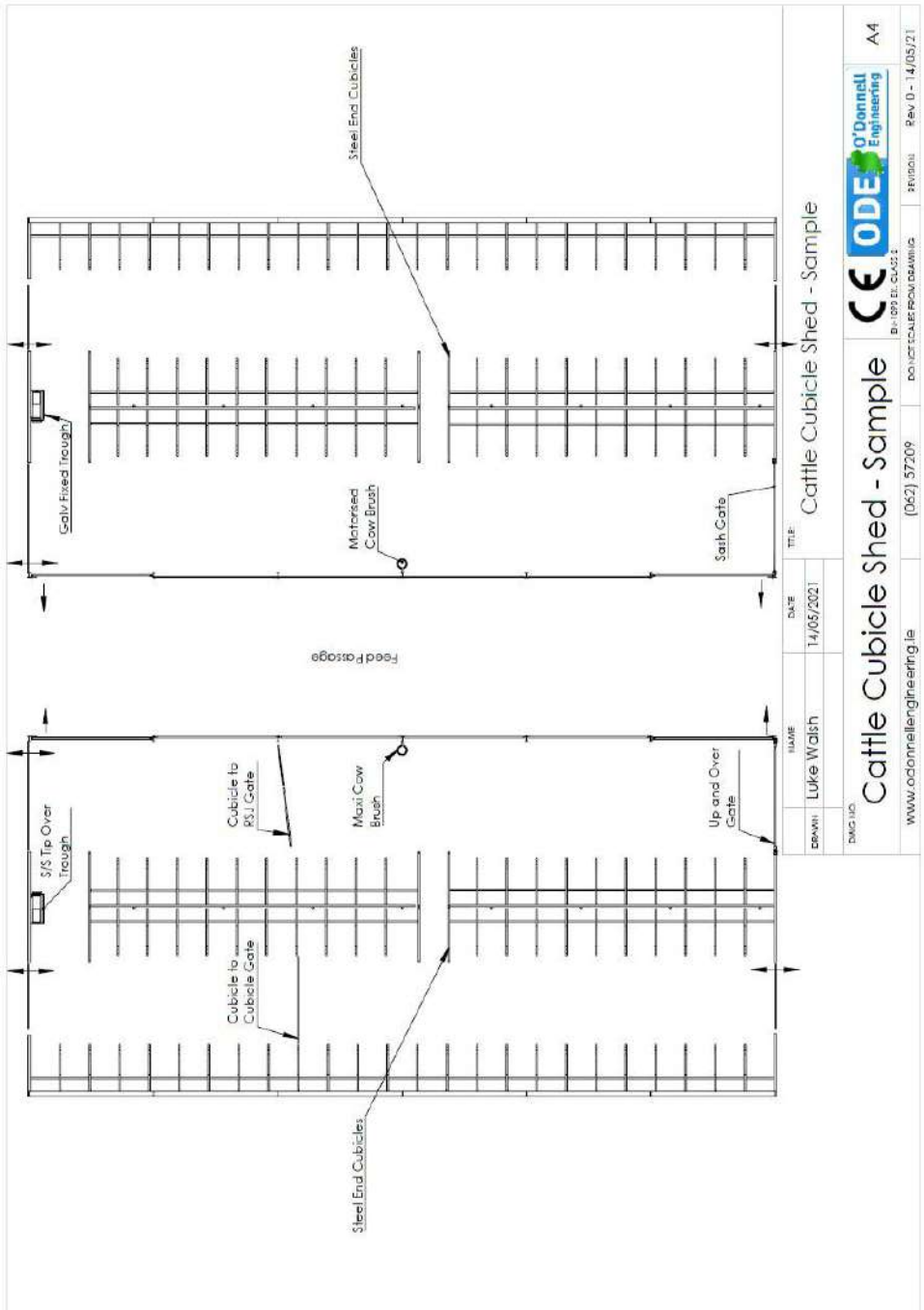
Up and Over / Sash Gates

- Passage way control via pivot up and over gates or sliding up sash gates
- Both designs work where restriction are against standard swinging gates
- Weight balanced gates with counter weight
- Independent system or can be mounted to existing pillars/walls
- Adjustable gate design to suit varying passage widths





Cubicle Shed Layout





EasySwing

Safe • Easy • Strong • Budget • No Power Required

EasySwing

The EasySwing product family consists of four different cattle brushes:

Mini • Midi • Maxi • Totem

- Easy installation and minimal maintenance required
- Strong, durable structure
- Provides excellent stimulus for animals
- Animals are able to brush the top of their back as well as their sides
- No electricity required, low cost of install and usage
- Attachment kits for different install locations
- Easily cleaned and changed brush discs
- The brush is easy to position & freely turns from one side to another automatically
- Due to disc brush design whole brush doesn't need to be changed greatly reducing maintenance and operating costs compared to other units
- Electric pendulum rotary brushes also available





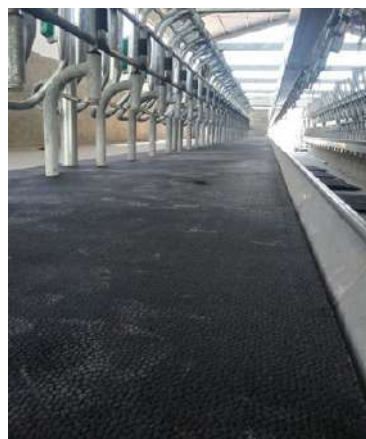
- O'Donnell Engineering provide some of the leading rubber mats for the Irish market
- Cow comfort mats are available in Individual, Interlocking or continuous roll out systems Animat's exclusive non-slip pebble surface on all mats, delivers increased traction and superior cow comfort even when wet, to allow you cows to maintain a natural footing
- All rubber mats underside are grooved so that liquids drain towards the passage ways thus providing a clean and dry cubicle bed
- Cow mats are produced according to standard cubicle bed dimensions and are easy to install Manufactures guarantee provided as standard with all rubber mat and mattress systems
- All anchors and required brace plates included



Animat Original Cow Mats (Individual or Interlocking)



- Economic solution for single or multiple beds with 20mm rubber
- Exclusively designed skid-resistance surface that evacuate water
- Guaranteed not to shrink, curl or expand





30mm Honeycomb Mattress



- 30mm Honeycomb rubber Mat available in Individual or Interlocking
- Specially designed to cater for increased cow comfort with internal honeycomb structure
- Hammer top anti-slip finish which is non-porous or abrasive
- Easy to clean and wash down

Foam Mattress Interlocking Mats



- Combination Foam and Rubber mattress increases cow comfort, welfare and productivity
- Mat has a sealed latex foam layer underneath rubber mat, which is interlocking on two sides with a sloped profile at the rear edge for easy access and hygiene
- Latex foam underneath provides excellent comfort, durability and firmness.
- Standard mat is 1.8m x 1.15m but can be increased when needed by addition of spacers
- 25mm Latex foam sealed in individual plastic bag
- Countersink anchor points moulded into mat to provide smooth finished product



20mm Roll Out Rubber Mat (DBR1.1R)

- Manufactured in Europe meeting the high quality standards of ISO-TS 9001 & 14001
- Anti slip structure of mat reduces risk of joint and hoof injuries
- 10 year guarantee as standard
- Countersink anchor points moulded into mat to provide smooth finished product
- Textured grip, reducing risk of slipping
- Slanted rear edge for added hygiene and ease of access
- Required fixers provided as standard



DBR1.1 Roll length @ 1.7m x 65m

DBR1.6 Roll length @ 1.8m x 35m

32mm Roll Out Rubber Mat (DBR1.6)

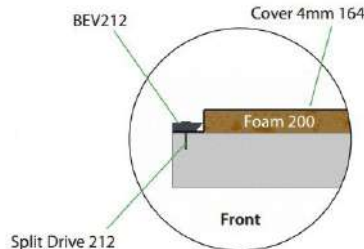
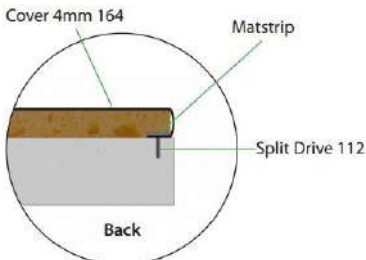
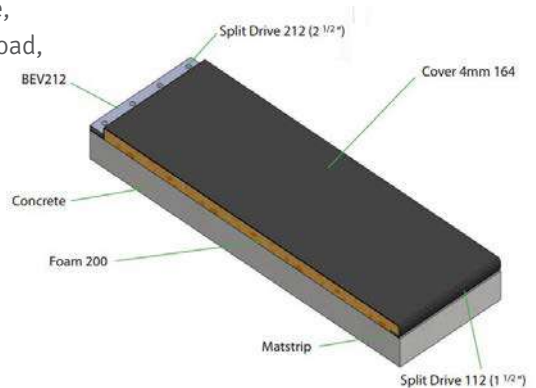




Animatress Mattress System



- Animatress has been tested by strict DLG-Fokus testing protocol for acid resistance, durability / elasticity, permanent tread, load, abrasion, slip resistance and cleaning distance
- The exclusive 4mm top cover has high strength fabric backing ensuring mattress system will not deform, wear or tear
- 40mm sealed high density PU open foam underlay provides superior comfort
- Continuous mattress system anchored to bed every 6 inches via plastic strips



... 7 year Manufacturers Guarantee on Animat Cow Mat and Mattress systems ...



O'Donnell Engineering have an extensive range of feed barriers, designed and manufactured to the highest quality. Barriers are available to suit standard 15ft 9in bays or any custom size.



Diagonal Feed Barrier

- Most cost effective feeding spaces per liner foot
- Suitable for all cow and cattle types
- 80 x 40 heavy gauge framing for increased strength and durability



Self Lock Feed Barrier

- 60 x 60 heavy gauge box framing for superior strength
- Adjustable neck width to suit animals
- Suitable for Feeding, Testing, A.I., Vaccinating, Clipping, Freeze branding & Training
- Quick operate locking system which can be easily set to non-lock mode
- Low noise during operation



Long Reach Feed Barrier

- Ø76mm top and bottom bar for superior strength
- Greater feeding reach
- Easy human access through the stall
- Most commonly used with suckler cows and young stock



All feed barriers are available in the following options:

Fixed or Hinged over wall • Weanling Barriers • Full gate
Movable Silage Barriers • Tombstone • Flip up troughs



Combination Barriers

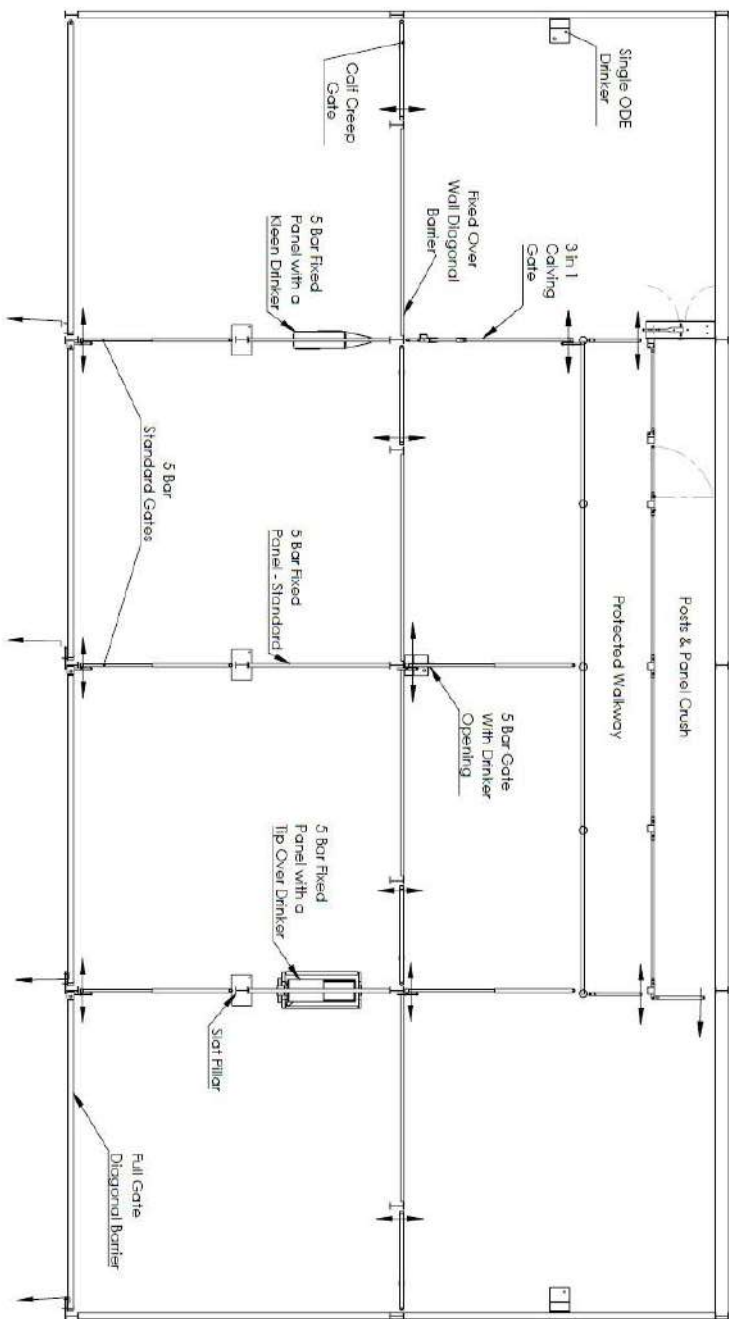
- Barriers and gates can be made to suit any requirement
- Complete designed completed using latest 3D technology
- Complete layout drawing completed and verified prior to manufacture





Gates and Pen divisions are available in fixed or adjustable lengths to suit all requirements. Option of 4 Bar or 5 Bar standard lengths from 8ft to 16ft and Adjustable from 2m to 6m. Interchangeable fronts on adjustable gates allow easy adaptation:
Latch end • Drinker opening • Calf creep opening • Man Escape front





NAME		DATE	TITLE
COWMAN Luke Walsh		12/05/2021	Internal Penning - Sample Layout
DWS/HCO			
Internal Penning - Sample Layout			
www.odonnellengineering.ie		(067) 517209	DO NOT SCALE FROM DRAWING
CE ODE		Rev 0 - 12/05/21	
A4			



Cattle Handling

With over 40 years of experience designing and installing standard and custom cattle crushes, our experienced design and sales team is available to answer any queries or provide practical advice in designing your ideal crush and handling unit.



Crush Races available

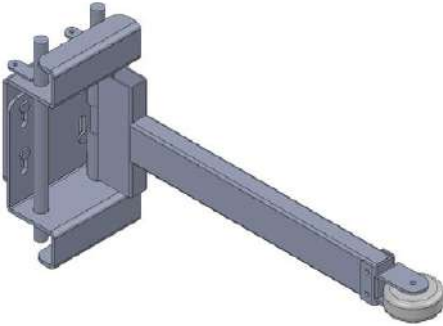
- Post and Panel Crush Run
- Post and Rail Crush Run
- Combination of both
- Custom made to your requirements
- Custom race with removable pillars



Crush Race attachments

- 4/B Fixed Panel • 4/B Gate Panel • Leg Hoist
- Squeeze Panel • Platform Scales • Caesarean Panel
- Sliding gate (Minimal track) • Flip Down Steps
- Crush Head Lifter • Anti Backing Bar





Anti-Backing Bar

- Simple & effective design to prevent animals backing down crush
- Design is dual side operational
- Quickly fitted to existing crush with adjustable bracket and pins to suit any panel or post crush
- Spring loaded operation with wheel for smooth animal interaction



Crush Head Lifter

- Spring loaded activation pins allowing easy operation
- Can be installed on any crush in market due to adaptation bracket
- Swings out of way when not in use by means of heavy duty pin
- Quick release one hand operation
- Can be completely removed from crush by simply removing pivot pin
- Gear operating ratchet system to hold head height for greater strength and durability



Flip Down Step

- Foldaway design reduces space requirements
- Vertical locking position for when not in use
- Grated floor to provide traction and prevent slips
- Can be manufactured to suit any size post and width. Custom length also catered for.



Self Lock Head Gate



"Y" Type Gate



2 Stage Gate



2 Stage with Cage

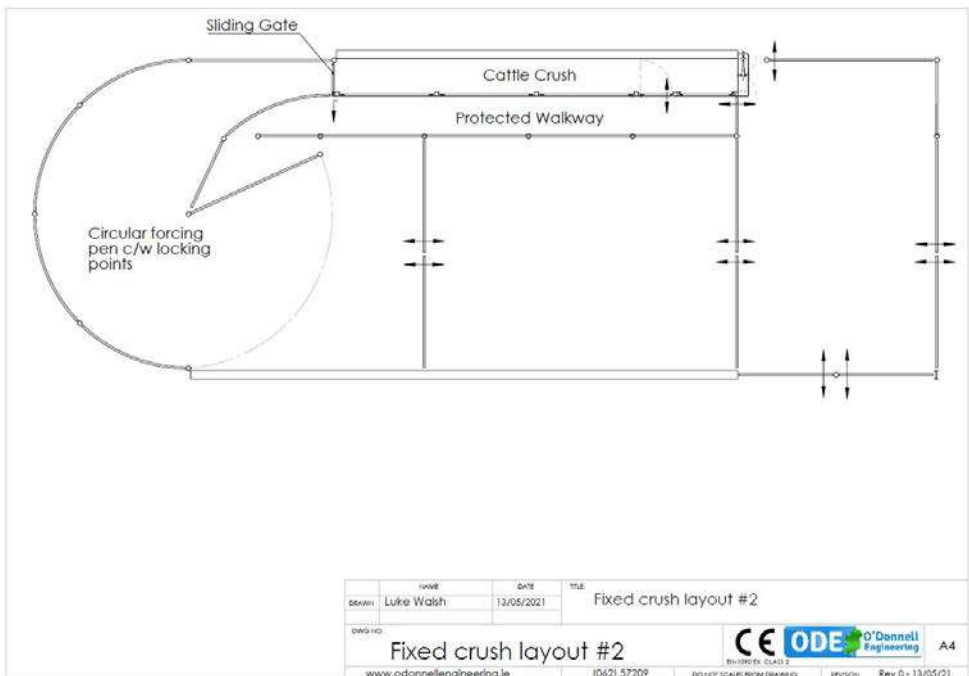
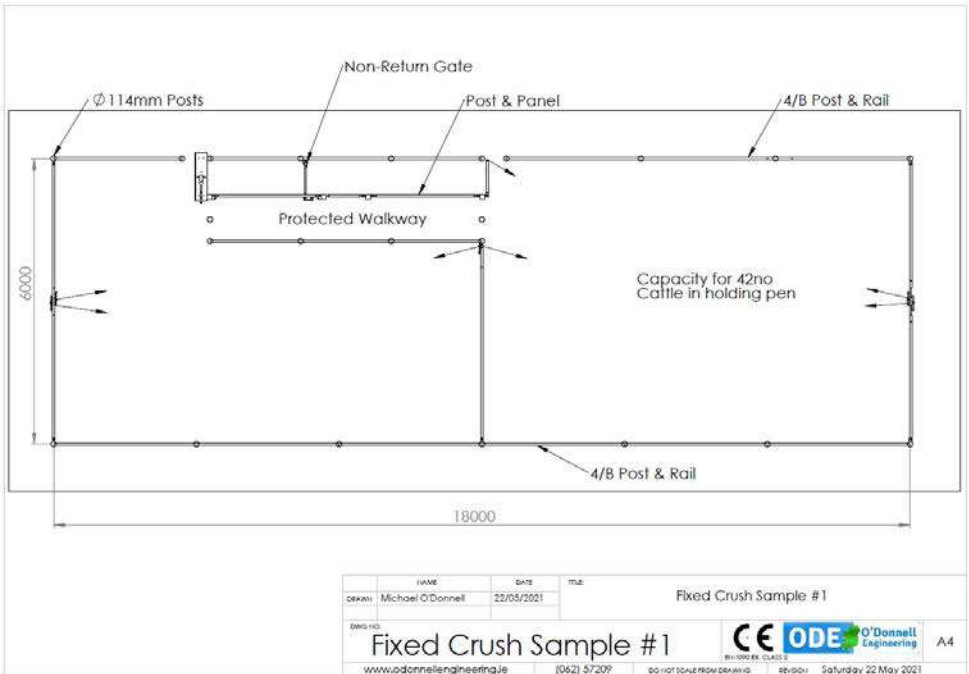
Sliding Back Gate (single or double)

- Minimal Track required
- Suitable for fixed and mobile handling units
- Nylon rollers for smooth operating of gate
- Sheeted or Non-Sheeted available
- Manual or Pneumatic operated



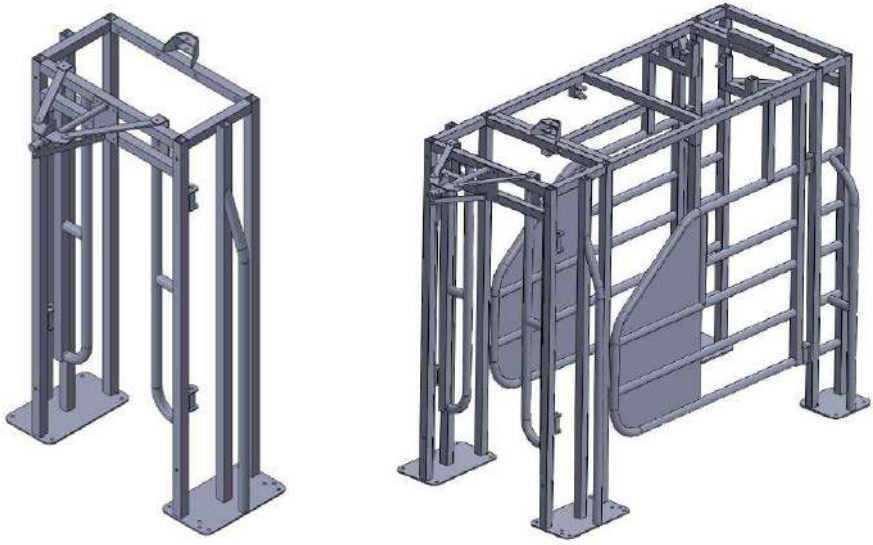
Leg Hoist

- Portable leg hoist suitable for all crush types, shapes & sizes
- Easy to install and remove
- Quickly and safely raises and lowers legs for hoof treatment



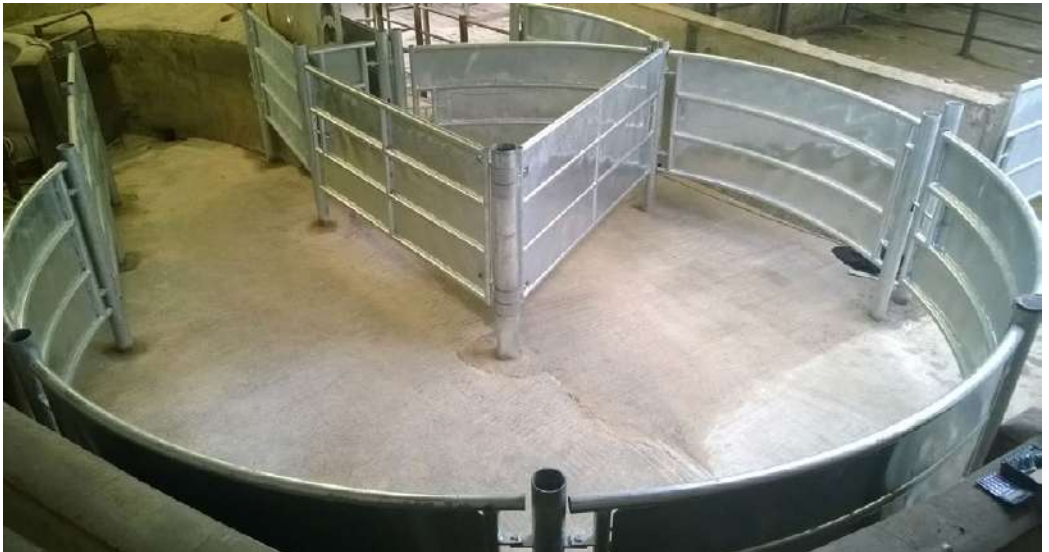


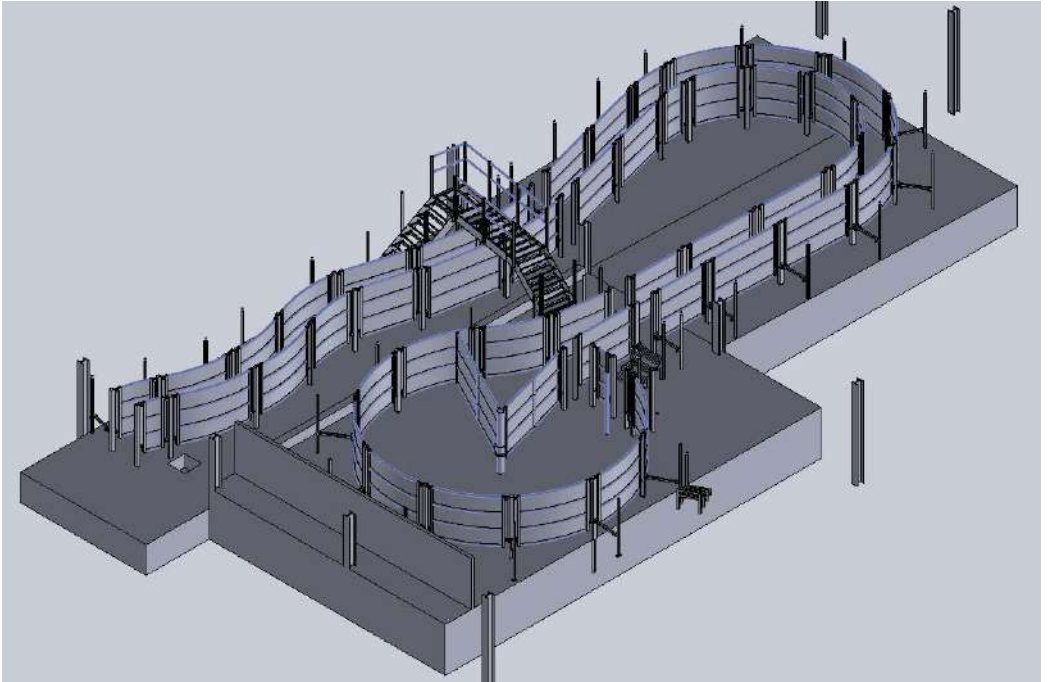
Texas Gate (c/w Drafting Module)



Forcing Penning

- Forcing pens & Standard pens available in sheeted or panel and post construction
- Manufactured to suit individual requirements from site visit and design layout completion
- Heavy gauge construction with sleeve pillar brackets for 360 degree rotation





Complete forcing pen, curved Race, Raised walkway & Cross over access stairs completed. Designed in latest 3D software and custom manufactured to suit site conditions and owner requirements.





Portable Cattle Handling



- Mobile 8ft cattle crush with 3 point linkage for easy and quick moving
- Sections fold together for transport
- Steel chequered floor for maximised grip
- Available in 8ft, 16ft and 24ft
- Works with all head gates and crush additions
- Additional 8ft field panels and single or double support loops can be added to create complete portable cattle handling pen system



- 8ft Field panels manufactured with plated feet to prevent sinking in soft ground
- Quick release pin connection to create instant holding pen or race
- Single and Double loops provide additional strength and support to holding pen, while also creating a funnel effect
- All panels store away in crush frame for easy transport using 3 point linkage





Caesarean & Suckling Crate

- Portable crush with additional drop down side panel for caesarean and flip up for suckling
- Steel chequered floor for added grip
- Can be used with any head gate
- Heavy gauge steel construction
- Can be combined with portable panels to create portable penning system

Custom Portable Crush

- Combination portable crushes manufactured to suit farmers requirements and budgets
- Hot dipped galvanised
- 3 point linkage or fork loading
- Heavy duty construction





Hydraulic Cattle Crush



- 25ft long with hydraulic lift axle
- Complete checker plate throughout floor
- Hoof crate incorporated with separate hand winch included
- Animal foot holder
- Compatible with any ODE head locking gate
- Flip down side step compatible
- Side opening gates for hoof care and access gate behind animal
- Rear opening gate operated from side with spring loaded latch receiver
- Rear reflectors and lighting board
- Hot dipped galvanised



- Complete portable crate with two side opening gates and two back extension gates
- Double sided braked winch for foot lifting with protective cover
- Braked winch keeps control of leg when raising and lowering to prevent injuries to animal and operator
- Front swivel leg rests with tighteners and height adjustable. Holders hinged also.
- Needle bearings on all rollers and winches for superior durability and smoothness
- Belly Band and foot strap included and operated on separate winch system
- Chequered flooring throughout with rubber mat for additional comfort
- Anti-kick rump bar operated via braked winch to lock in any position
- Heavy Duty 60 x 60 box framing & Hot dipped galvanised
- Self Locking head gate as standard and compatible with full range of head gates
- Custom manufacture also catered for to suit applications and budgets
- Head lifter compatible
- Motorised winch option available





Weighing & EID Systems



All weighing systems are IP68 rated with STAINLESS STEEL load cells as standard
Blocker filter guarantees a perfect and stable reading of livestock weight

Dini Argeo

- IP68 Dini Argeo Indicator with built in rechargeable battery
- Easy to clean ABS IP68 case, resistant to harsh and corrosive environments
- 5-key keypad with backlit LCD display
- Adjustable inclination mounting bracket



Dinamica Generale

Taurus 10



Taurus 30



Taurus 50



Taurus 70



iLivestock eWeigh System



- This fully integrated weighing software works effortlessly with the dedicated weighing screen within quick scan section of phone app
- Compatible with all ODE weighing platforms and portable crates
- eWeigh is fully integrated with EID stick readers in the application
- As the core functionality is app based, it can grow and develop with your business over time without the need to purchase a new device
- Removes the need for digital display as real time weighs are displayed on users phone or tablet
- Free full access to the iLivestock app with records shared across your devices





Gallagher Systems

- Market leading full colour touch screen technology - readable in all conditions with a tough rugged exterior
- Animal data analysis on device - Shows individual weight gain graphs, as well as weight distribution plots for all animals within a weighing session
- Comprehensive life data and traits allowing up to 9no per session
- On board 24/7 help, entire product manual loaded into indicator. Help is only one click away
- Comes with convenient canvas carry case for Indicator and ancillary equipment



W210 Weigh Scale

- Entry level automatic weigh scale
- Ideal for basic weighing tasks



TW-1 Weigh Scale

- Simple to operate touch screen
- Collect data to optimise animal performance
- Draft by weight, weight gain or by ID list.
- Easily separate animals in to treatment or management groups



TW-3 Weigh Scale

- Simple to operate touch screen
- Record and review weight, life data and traits to optimise animal performance
- Record treatments on the spot - animals can be weighed and administered the correct dose rate, all recorded on the weigh scale at the time of treatment



- ODE and Gallagher load bars available separately.
- Heavy galvanised steel chassis construction for long life and to withstand the harshest environments
- Designed for outdoor use with fitted high quality moisture proof connections
- Stainless steel load cells



Weighing & EID Systems

Permanent EID Tag Readers are ideal for fixed, hands free EID data collection on any livestock, usually in a weighing crate or at any location in an existing race.

Pairs easily with indicators to send animal ID to record individual weights along with other information



Agrident AWR Stick Readers



AWR250 Reader

- Reads all types of HDX & FDX-B tags
- 2.4" Screen with 7 button directional pad for easy and simple navigation.
- Wireless connectivity to Indicators
- 8GB Memory with 100,000 records
Includes Agrilink software as standard
- 2 Status LED notifications along with audio speaker and vibrating motor



AWR300 Reader

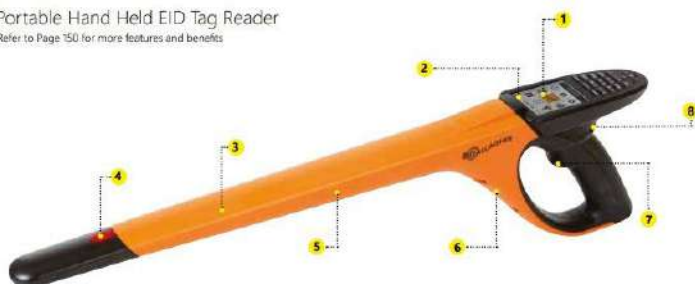
- All the features of the AWR250
- USB, RS232, Bluetooth and WLAN interface
- 30cm Read range
- 1,000,000 scanned tag memory
- Capture large animal data up to 25no custom data fields (birth, vaccination, movement)

Gallagher HR Stick

- 1 Large easy to read screen - 2.8" backlit colour display with hi-resolution large graphics-easy
- 2 Pair with other devices - Easily search and connect via Bluetooth to other devices.
- 3 ISO half and full duplex compliant
- 4 LED, vibration and beeper to show tag read successful
- 5 Simple connectivity - Includes PC and charging cable
- 6 Market leading ergonomic design with long reach and hand guard for maximum operator safety
- 7 Fast and continuous reading with one trigger click
- 8 Compatibility - with Gallagher and other brands of EID capable weighing data collectors

Portable Hand Held EID Tag Reader

Refer to Page 150 for more features and benefits



ANIMAL PERFORMANCE SOFTWARE (APS standard included)
Analyse date and upload in three easy steps.



FREE ANIMAL DATA TRANSFER APP
Transfer animal data using your Gallagher Hand Held EID Tag Reader and Android Smartphone. Available FREE from Google Play.

HR4 and HR5



Large display, multiple traits - sex, breed, condition score and pregnancy status.



Easy highlighted group name with optional colour groups



View past traits, activities and life data recorded against an animal

HR5 Specific



Large display, multiple traits - sex, breed, condition score and pregnancy status.



Easy highlighted group name with optional colour groups



Numeric, text, date and pick list fields.
Animal notes/Personalised session names eg Week 13.
Easy to identify sessions once uploaded to APS software



Crush Platform Scales

- Stock kit fits any standard cattle crush, however platform can be manufactured to suit non-standard crushes
- Heavy gauge folded aluminium with sides to prevent slipping
- Placed in your crush or race for weighing sessions
- Full EID tag reading compatibility



Portable Weighing Scales

- Complete weighing crate to encase animals during weighing (no weight loss)
- Crate rests on four 1,000kg capacity stainless steel load cells (IP68 rated)
- Compatible with full range of load cell and indicators available
- Heavy duty load cells in protected load bars for increased resistance to damage from impact and side load
- Fully customisable options available for functionality and user requirements





Portable Feed Troughs

- 16ft or 20ft lengths
- Heavy duty welded box frame and folded galvanised sheeting
- Retractable hitch
- Large quad tyres for use in soft ground & stability
- Anti-jump bar (collapsible)
- Complete with four stabilising legs when not connected at hitch to prevent tipping and provide solid feeding trough in any situation
- Anti-jumping bar to prevent animal injury can be lowered while moving
- Double folded trough feed area to separate feed



Bull Feeder

- Available gate hanging or free standing frame
- Sliding roof for easy meal loading
- Adjustable internal meal flow regulator
- Front PVC curtain to keep out birds



Calf Creep Feeder

- Available in 8ft x 8ft (up to 60 calves) & 8ft x 4ft (up to 30 calves)
- Large sealed meal storage space with flow rate adjuster
- PVC curtain • Extra deep trough
- Lockable sliding roof for safe PVC curtain operating in windy conditions
- Complete creep frame tilts up during transport
- Front adjustable width and height calf openings
- Heavy duty construction • Full width 3 point linkage with trough support as standard
- Fully galvanised • Can operate without sides as an adlib feeder
- Euro hitch and fork lift also available



Calf Feed Troughs

- Available gate or wall mounted
- Flip up lid for easy hopper loading
- Front PVC curtain to keep out birds
- Standard size 4ft (8ft double available)
- Self regulating meal flow from hopper
- Galvanised sheeting construction



- Cattle feed trailer available with diagonal or self lock barriers
- Painted or galvanised trailer frame • Steel floor suitable for meal feeding as standard
- Frame completely galvanised • Large pumped tyres for easy moving
- Barriers can be easily removed if required • Swing out back gate for loading & cleaning





Yard Troughs

- Available in 8ft single or double versions
- Sturdy construction
- Anti-flip over legs in double trough for increased stability
- Welded construction for durability and strength

Stainless Steel Tip Over Troughs

Rotating stainless steel trough available in the following sizes:

1m (110l) • 1.5m (170l) • 2m (220l)

- Rotating troughs rotate for fast clean out operated via integral handle
- Mounting systems allows floor, end cubicle, wall or internal penning gate installations
- Comes with protection cage, flexi hose connector & fast fill Hansen ballcock system



Fixed 1.5m Galvanised Drinker

- Welded steel drinker c/w recessed bottom clean out
- point
- Hansen fast fill ballcock with Protection cover as standard
- 1.5m (170 Litres)



Drinkers & Water Troughs



Kleen Drinker

- Provides clean water to two individual pen division via dual side flaps, which remain closed when trough is not in use
- Comes ready plumbed with standard ballcock
- Heavy gauge steel plate
- Fits into pen division panels

Galvanised Troughs

- Galvanised water troughs available in the following sizes:
 - **Single** (9ltr Capacity) • **Double** (18ltr Capacity)
- Custom to suit requirement
- Manufactured from 3mm steel plate & Galvanised steel cover
- Ball cock and drain plug included
- Floor recessed to allow easier cleaning
- Steel Protection guard included
- Can be wall, pillar or gate mounted
- Hot dipped galvanised for superior strength





3 in 1 Calving Gate

- Stock lengths available from 8ft to 15ft with custom lengths manufactured to suit
- Head gate separate from division gate
- Heavy duty drop pin secures head unit
- Internal directional and sucking gate



Yard Transporter

- Meshed sides and aluminium floor with side and back swinging panels
- Lockable front brake
- Large pumped needle bearing wheels
- Removable front quad hitch

Individual Calf Pens

- 2'6" (W) x 4'6" (L) pen size
- Complete with plastic or timber slats as standard
- Quick and easy assembly & disassembly
- Can be setup individually or as a group
- Individual hay racks available
- Bucket or Teeth feeding bucket rings
- Swing out front panel for easy loading





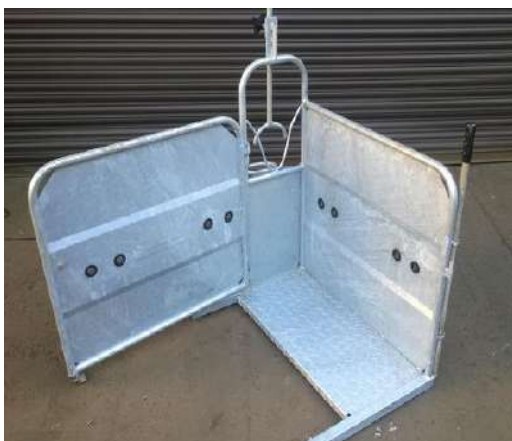
Dehorning Crate (split front)

- Split front doors operated from overhead
- Nose ring to securely hold calf head
- Quick head restrainer adjusts to any size calves
- Swinging side panel for easy loading
- Crate on wheels for easy movement
- Angled front doors for greater access to horns



Dehorning Crate (standard front)

- Swinging side panel for easy loading
- Nose ring to securely hold calf head
- Quick head restrainer adjusts to any size calves
- Fully hot dipped galvanised
- Wheel attachment available
- Swinging side panel for easy loading & securing calf





- Calf feeding gates manufactured in stock or custom lengths with stock proof latching
- Available with removable troughs, flip down bucket rings or Combination
- Lockable feeding gates available
- Post and sleeves option available to allow fold up when not in use
- Onsite consultation completed by O'Donnell Engineering to discuss layout, feeding, watering and penning solutions available

Transport Carts

- Large range of carts manufactured to assist in the movement of feed and animals around the farm
- Manufactured to suit requirements, functionality and budgets



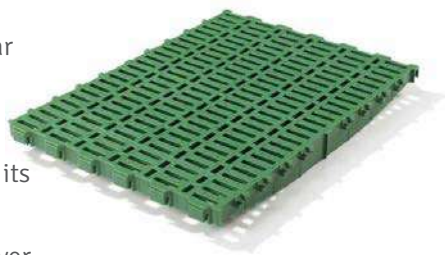


Calf Plastic Slats

The temperature neutral Prairie and Stepper slats are increasingly used in calf rearing as an economic and practical alternative to concrete, wooden slats or bedding.



- Stable and longer lasting than timber
- Very hygienic due to 20mm slits and closed molecular structure
- Easy to use and install
- Lower operating costs due to savings in bedding and its storage
- Complete with fibre support beams for concrete or over tank installations



Milking Parlour Plastic

Milking parlour plastic slats offers milkers welcome health care during the working day in addition to step safety and comfort.

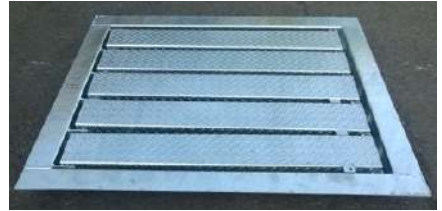
- Easy cleaning and effective drainage
- Anti-skid surface
- Slightly elastic, it is gentle to back and joints
- Underfloor ventilation with warm air is also possible





Agitation Covers

- Made to measure agitation covers
- Flip up fingers with separate protective cage underneath
- Manufactured as per government department standards and requirements
- Checker plate finger construction for maximum grip
- Can be manufactured in any combination of fingers and layout



Cattle Grid

- Heavy duty (Ø76mm) and standard duty (Ø48mm) grids made to measure
- Support flat to ensure even contact on support walls
- Easy installed with slotted holes for anchoring to ground
- Can be made in one complete section or bolted together for ease of transport





Entrance Gates

- Entrance manufactured to customers design and specifications
- Gates can be made for manual swing, manual slide or automatic slide opening systems
- Heavy duty construction • Hot dipped galvanised • Key pad or remote operated
- Any design catered for with cnc cutting & bending allowing for bespoke details
- Robust and non reversing sliding gate operator (FAAC)
- Heavy duty wheels and nylon guide rollers
- Safe beam photocells to prevent damage to vehicles and persons



O'Donnell Engineering provide a complete galvanised steel kit to fit out your milking parlour. Complete kit simply bolts together greatly reducing the cost and time required to install onsite. All supports, rump rails, mangers, adjustable feed troughs, penning, backing gates and drafting gates are available in stock or custom lengths.

Parlour Stallwork

- Straight or Zig-Zag sections
- Bolt together connection
- Overhead Galv RSJs
- Heavy tube construction
- Can be manufactured to suit different size mangers
- Connection brackets included



Parlour Mangers

- Stainless steel trough & galvanised dividers and brackets
- 2ft 6in or 3ft centres
- Universal design for left and right
- Anchors and bolts included
- Improved control & reduced stress

Parlour Locking Stalls

- Manufactured to suit standard parlour spacing (2ft 6in standard) or custom
- Can be operated manually or pneumatically
- Allows for greater and easier control of cows in parlour





Pneumatic Entry / Exit Gates

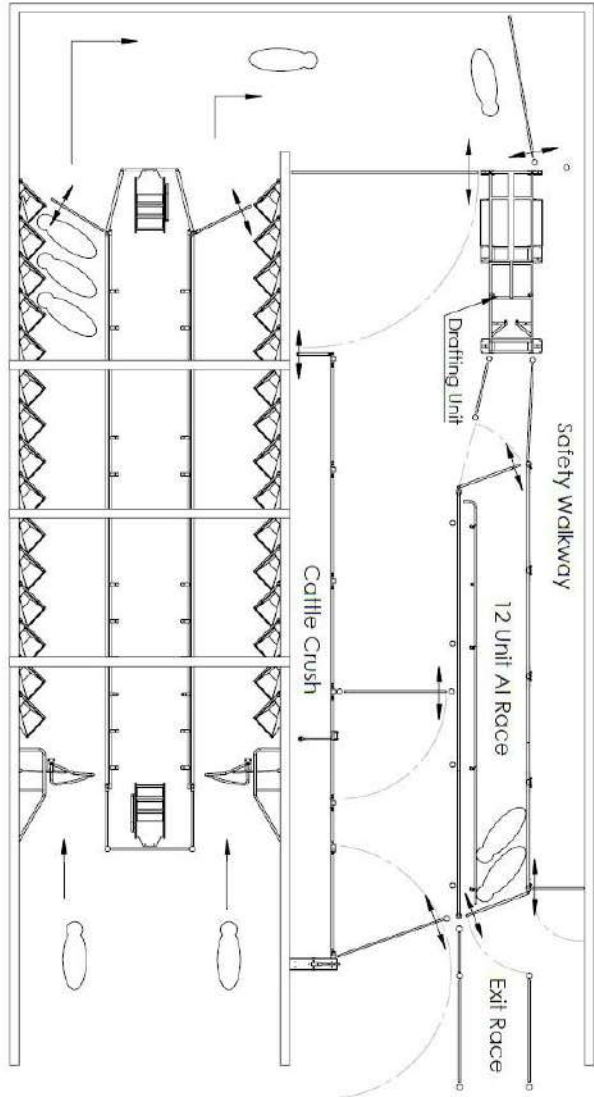
- Parlour entrance and exit gates available in kit format
- Dual lift and swing exit gate or three bar swing entrance gate with bumper rail
- Operated manually or pneumatic from pit
- Kit format so compatible with all parlours on the market



Collection Yard Forcing Gate

- Heavy duty swinging backing gates made to measure
- Sealed Ø168 hanging post for water connections
- Single or double sided bumper • 360 degree rotation
- Double wheel attachment to facilitate easier operation
- Can work with electric or water run motors • Jointed hanging bracket
- Post & rail or Post & Panel curved to suit backing gate and yard available





NAME	DATE
DESIGN Luke Walsh	07/05/2021

TITLE
Milking Parlour Shed

DWG NO.

MPS-DWG-001

www.odonnellengineering.ie

(062) 57209

DO NOT SCALE FROM DRAWING

REV/CH

Rev D - 07/05/21



A4



ODE Automatic Cattle Drafter

The ODE drafting system is a stand alone automated drafting unit, which allows farmers to sort and separate their herd. Designed, Tested and Manufactured in Ireland. The system uses standard “battery Free” HDX electronic identification ear tags. Livestock are free flowing through system due to double antenna installed allowing accurate and rapid animal detection. This reduces the operating stress on the animals allowing them to walk at their natural pace without the need to stop and scan each animal.



Benefits of the ODE drafter

- Stress free sorting with no need to stop animal flow from milking parlour, thus reducing layout area required for installation
- Simple two or three way drafting via use of HDX ear tags
- Touch screen operation via parlour rugged tablet, phone or manual divert button
- Compressed air operation
- Double antenna operation
- Can be integrated with any milking parlour system on the market
- Manual operation for livestock without RFID ear tags
- One man operation
- Notification of drafted and missed cows
- Minimal outlay space required
- Safety beacon and tablet notification when machine in operation
- Emergency shut off and isolation switches
- Quiet operating gates due to rubber dampers and grease nipple hinges
- Heavy duty welded box framing
- Data transferable via csv file
- Non protruding rams when in operation

Visit our website at www.odonnellengineering.ie
to see a video of the automatic cattle drafter system in use

ODE Automatic Cattle Drafter



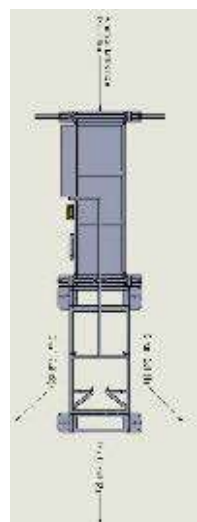
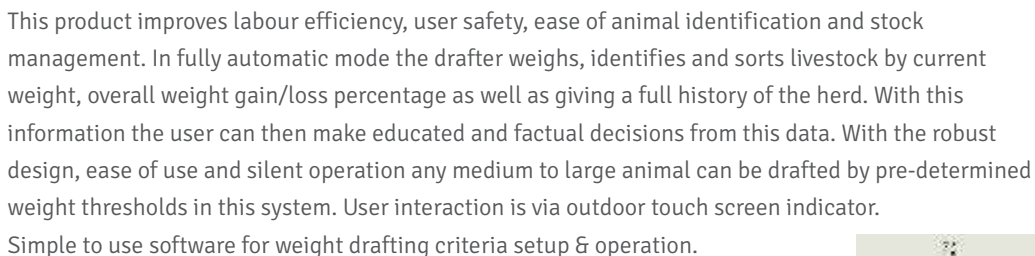
The drafter itself is a standalone unit and was designed and manufactured by O'Donnell Engineering in Emly, Co. Tipperary. The standard unit can be configured to provide 2 way or 3 way drafting. Cows are free flowing through system due to double antenna installed allowing accurate and rapid animal detection. This reduces the operating stress on the animals, allowing them to walk at their natural pace without the need to stop and scan each animal. As a result the ODE Drafting Unit doesn't require large holding areas pre drafting thus allowing it to be installed in confined areas. Depending on how that cows tag was pre-programmed she will either be drafted to the left or right or continue to walk straight ahead. The steel work is manufactured from heavy duty box sections and hot dipped galvanised.

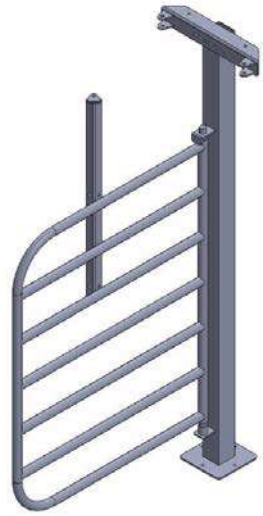


Software

The farmer interacts with the drafting system via a rugged tablet that is mounted in the parlour, all supplied by O'Donnell Engineering. This tablet communicates with the drafting system via a Wi-Fi link. The system can also be controlled using any Wi-Fi enabled device. The drafter will also inform the farmer if an animal hasn't been seen or if there is an issue with the drafter. The ODE drafter is fitted with a double antenna that positively detects the cow's tag as they enter the drafting unit. There is also a manual operation on the drafting system that will work for livestock not tagged electronically.

ODE O'Donnell Engineering		Manual Divert	
All Cows (95/96)	Drafting List (15/15)	Search	
G1	????	G2	
G1	0009	G2	
G1	0025	G2	
G1	0029	G2	
G1	0248	G2	
G1	0385	G2	
G1	0420	G2	
G1	0423	G2	
G1	0425	G2	
G1	0458	G2	





Notes



Fixed Sheep Race



- Sheep race can be customised to suit any customer requirements
- Quick assembly and disassembly
- Standard penning compatible with all handling and treating equipment





- Lightweight & heavy duty manufacture
- Complete race raises and drops easily when in desired location
- 8ft sheeted length complete with ATV tires and flip down axle
- Compatible with all penning and treating equipment
- Attachments easily assemble and disassemble and are stored in race when needed to transport





Race Components

Sheep Drafting Units

- Available in 2 or 3 way
- 6ft Extension handle for 2 way system to operate behind sheep
- Interchangeable design allows connection to full range of sheep handling equipment

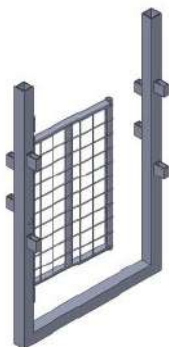


Sheeted Panels

- 10ft panels as standard
- Curved panel available
- Sheeted with 1.5mm galv sheeting

Non-return Gate

- Meshed gate prevents sheep backing out of race
- Spring loaded operation to make sure gate remains in closed position at all times
- Can be used in centre or end of race



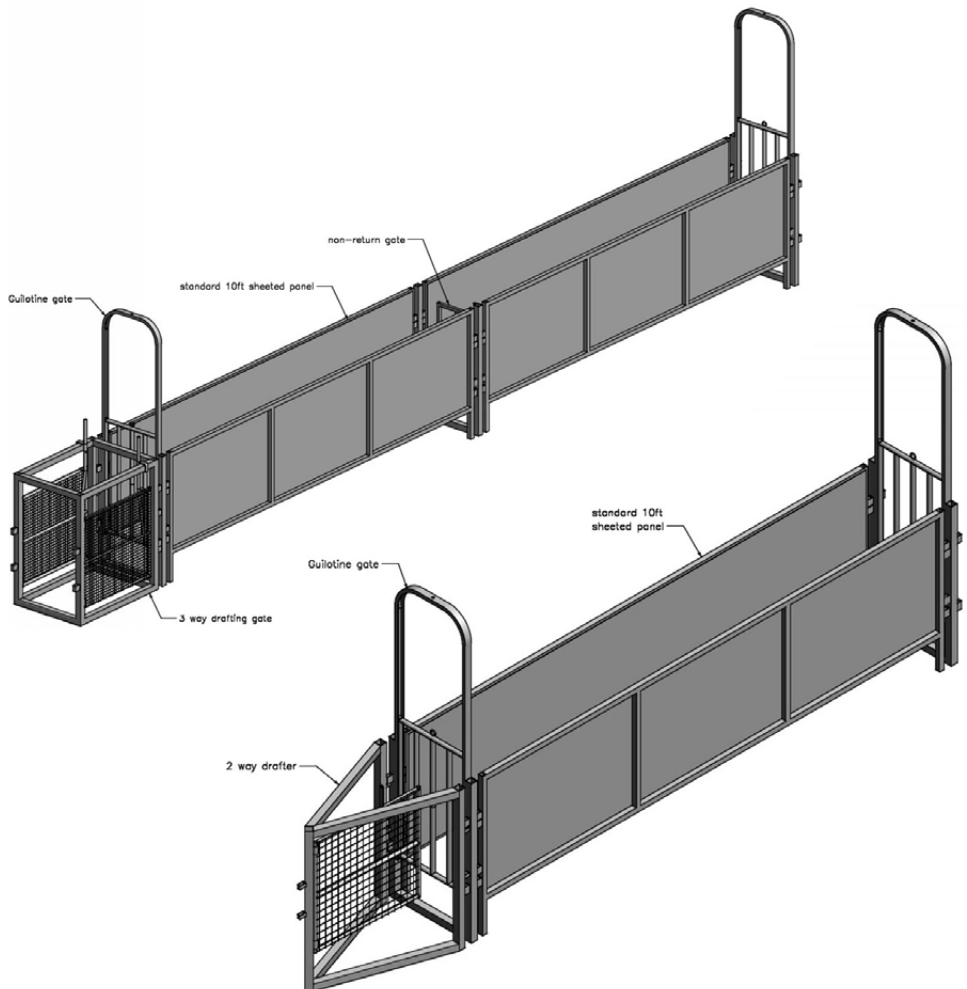
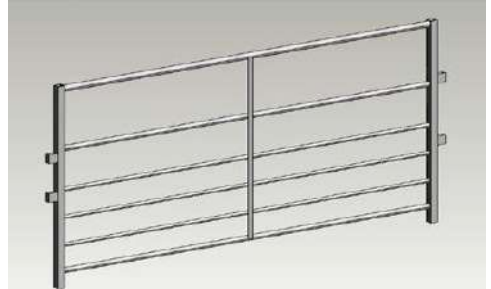
Guillotine Gate

- Internal sliding gate operated via pulley allows operation from anywhere in race



Penning Gates

- Standard penning gates available in:
 - 4ft, 5ft, 6ft, 8ft & 10ft
- 6/B construction c/w drop pin
- Meshed construction also available along custom manufacture





Roll Over Crate



- Universal design allows use from any direction in race
- Roll over frame extends out from main frame when in use to provide greater access to feet
- Grabber arms adjustable in width too suit size of sheep
- $\frac{3}{4}$ and $\frac{1}{4}$ side gates provide minimal obstruction during loading
- Easily operated with quick release lever operated with foot to improve operator efficiency





- Removable 250kg weighing clock
- Front and rear entry and exit gates
- On wheels for easy movement
- Frame suspended from overhead for accurate weighing
- Lever to disengage clock when not in use

Digital Indicator Upgrades Available:

- Gallagher W110 Indicator c/w 250kg suspension load cell
- Digital Hanging 300kg





Feed Barriers & Pen Divisions

Adjustable Feed Rails

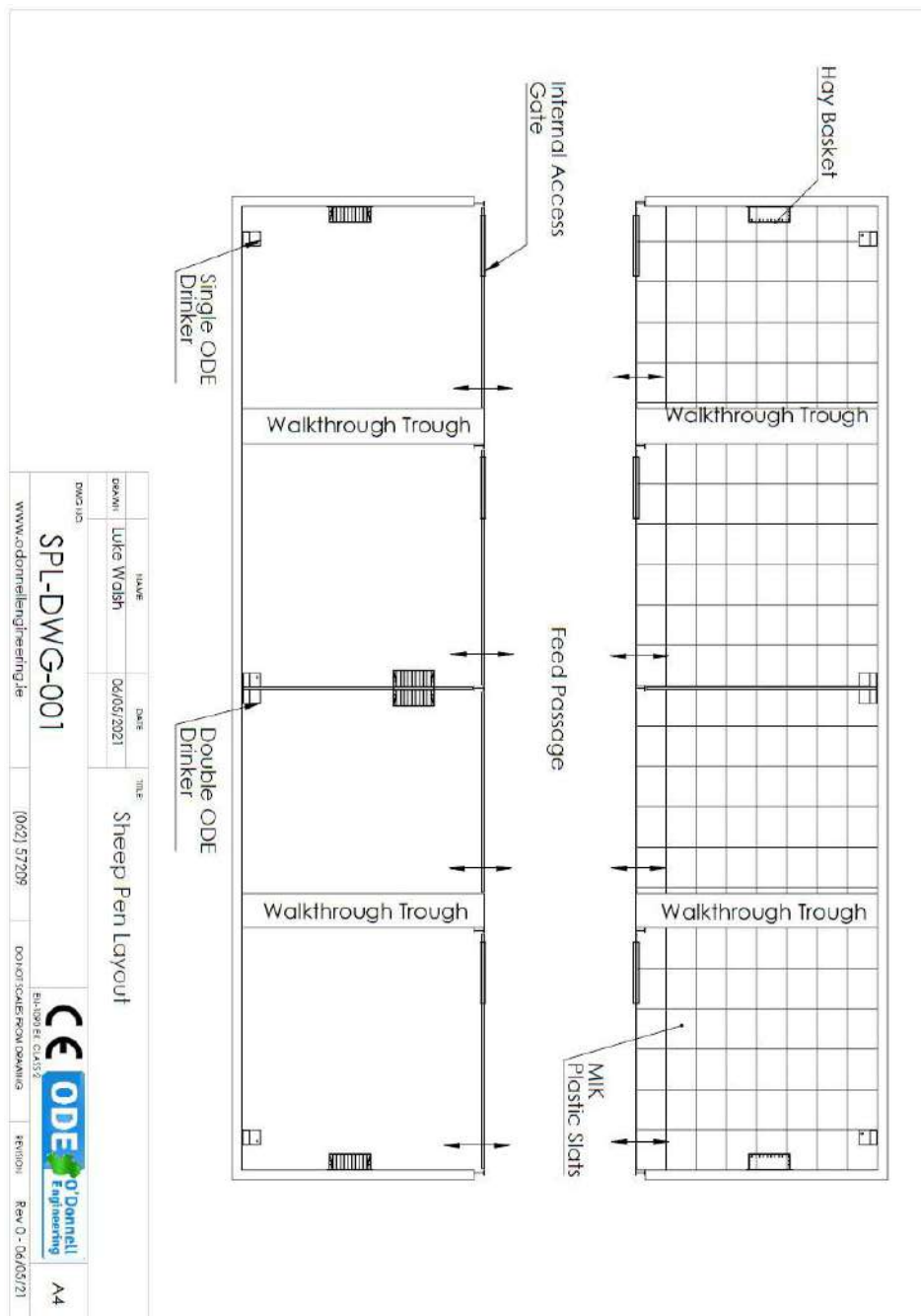
- Adjustable feed barriers to suit multiple dimensions
- Barriers come standard or with internal access gate
- Adjustable height feeding rail with support sections
- Treated timber at base
- Lock out feed / lamb rail if required



Pen Division Gates

- Pen division gate available in stock adjustable or custom manufacture lengths
- Meshed or straight 7/B option
- Standard or with access gate if required
- Compatible with full range of drinkers, hayracks etc.







Walk Through Feeder



- Walk-through feeder available in 4ft, 8ft & 10ft lengths (custom also catered for)
- Adjustable feeding rail height
- Four independently height adjustable legs
- Galvanised sheeting trough floor
- Optional trough end gates for use in pen divisions
- Ideal for dividing sheep pens

Hay Racks

Options available:

- Single Wall
 - Single gate
 - Double gate
 - Budget Double
 - Individual
-
- Gate and Calf pen hay rack slide and secure into position under own weight
 - Wall mounted hay rack available in 4ft or 8ft length
 - Solid bar construction for superior strength with mesh version also available



Sheep Plastic Slats

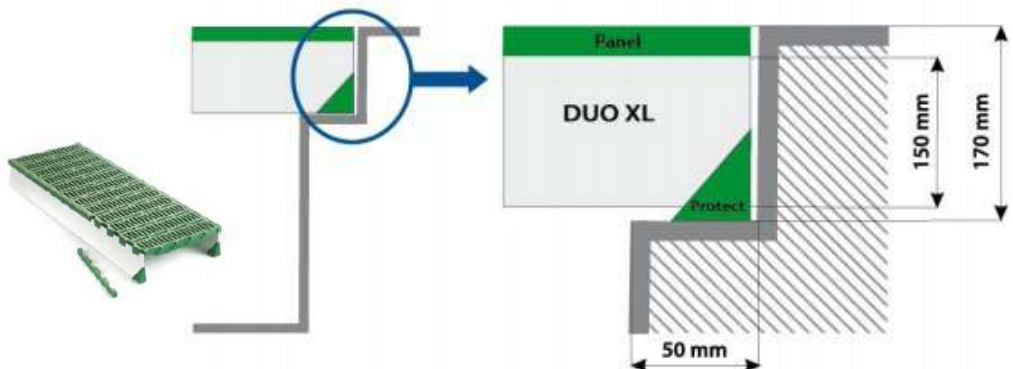


- Reduce bedding costs and labour inputs while greatly improving your livestock comfort
- Hygiene and Health Slats are durable, non-corrosive with gripped surface
- These can be placed directly on concrete floor or placed over open tanks with Fibre, Stainless or Galv support beams
- Come with standard 5year warranty with proven record of 20 to 25 years of working lifespan



- The stepper panel was especially developed for sheep to support healthy and economical animal keeping.
- Knobbed surface generating unique slide prevention and safe grip

- Self-cleaning due to 14mm wide slits
- Dry and temp neutral for healthy animals
- Stability, durability and resistance
- Allows moving safely and lying comfortably





Lamb Creep Feeder



- 8ft double sided lamb creep feeder suitable for any ground conditions
- Collapsible creep area locked in position during transport
- Large capacity hopper with flip open lid for easy meal loading
- PVC curtain to keep birds and rain away from meal
- Large pumped quad tyres with dual bearings
- Can be towed by Quad, Car, Jeep or Tractor
- Creep area can be easily dismantled to transform into yard feeder
- Hopper capacity approx. 300 litres





Adoption / Starter Unit

- Adjustable neck holder suitable for horned sheep
- Pivot head locking stall as standard for easy operation
- Sheep guard 2/B panels to protect lambs from ewe
- Side sheeted panels to protect lambs from elements
- Head restrained panel can used separately in corner of pen



Circular Feeder

- Size of standard bale of hay or silage with optional 3ft extension panel to increase capacity
- Splits in half if wanted to be placed against wall for yard or pen feeding



Footbath

- 8ft x 2ft unit complete with sponge as standard
- Large ribs on base to ensure hoofs are opened during treatment
- Can be combined to create 8ft x 4ft pen group footbath





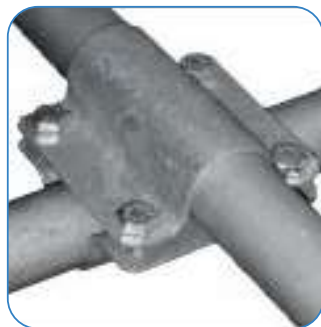




Extras & Fittings

ODE stock an extensive range of material and fittings:

- Allen Key Clamps
- T-Clamps
- Crossover clamps
- U-Bolts
- Joiners
- Galvanised Tubing
- Galv Sheeting
- Stokboard
- Anchors and Fixers
- Self Colour steel
- Tyres
- Bolt & Nuts
- Mesh steel
- Gate Hangers
- Post and gate caps





About Us



O'Donnell Engineering is a recognised designer, producer and fabricator of diversified range of over 200 labour saving products for the agricultural sector.

Within the 150,000 sq.ft facility O'Donnell Engineering are able to cater to any size project from the small farmer to the large consignments. With our fully automated bending, folding and cutting machines along with their full time welding areas in operation large quantities are produced while maintaining our high standards of finishing. O'Donnell Engineering has achieved compliance with the requirements of I.S. EN1090-1:2009+A1:2011 for CE marking of Structural Steel up to Execution Class 2 (EXC 2).



With well over 40 years' experience in the Irish and international market, we will work with you to design the optimum layout and products to suit your new or existing farm building. In conjunction with our extensive range of products, we can custom manufacture products to suit your needs. O'Donnell's will send its field representative to visit the customer on site. They will discuss in detail any specific individual requirements and will then produce detailed drawings for your review.

Contact Us

Head Office	Tel: 062-57209
Billy O'Donnell	Tel: (086) 2730571 Email: billy@odonnellengineering.ie
Michael O'Donnell	Tel: (087) 1836345 Email: michaelod@odonnellengineering.ie
John O'Donnell	Tel: (087) 2730571
Liam O'Donnell	Tel: (087) 9375209 Email: liamod@odonnellengineering.ie
Website	www.odonnellengineering.ie